



Raizer is an excellent help in our day-to-day work.

- Nurse, Heidi Aagaard

RAIZER® II

by Liftup

Raizer is a simple battery-operated mobile lifting chair that helps a fallen person up to an almost standing position within a few minutes. Raizer can easily be assembled and operated by only one assistant and does not require any physical effort besides a supportive hand. The design of Raizer makes it easy to assemble and operate and ensures easy cleaning.

www.raizer.com

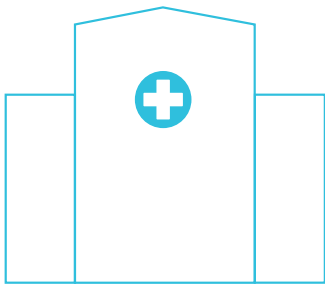
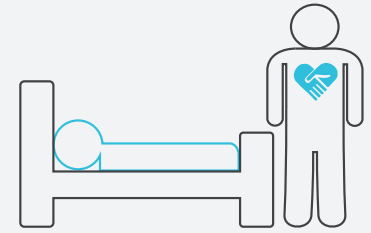


Raizer ensures a stable, safe lift

– For user and caregiver

Home care

Operating Raizer requires only one caregiver. This can alleviate stressful situations, as the lift can be performed swiftly and easily without the caregiver having to wait for assistance. The person who has fallen will soon feel safe and comfortable, and the caregiver can move onto the next task.

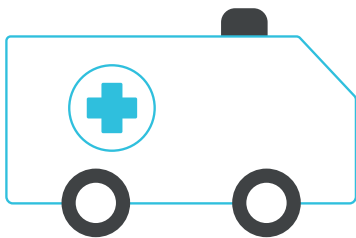
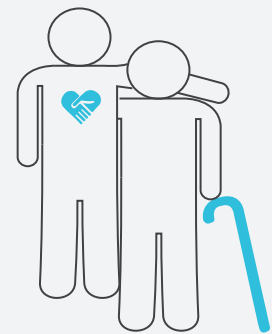


Hospitals

The lifting chair ensures an automatic, stable and safe lift and thus is gentle for both the carer and the patient. Raizer makes it possible to use the patients' own resources when lifting them from the floor, and at the same time, creates a sense of comfortable closeness with the patient when you use it.

Institutions

With Raizer you can perform a safe and comfortable lift and the caregiver avoids strain on e.g. back and arms. Raizer requires only a brief instruction and it is easy for the carer and any new staff to operate. It is possible to disinfect Raizer, which makes it suitable for the use of several different caregivers in one institution.

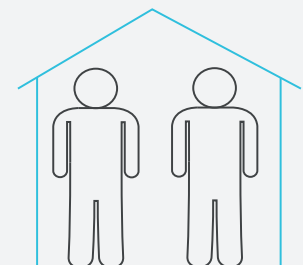


Rescue services

The Raizer is easy to stow away and recharge in an ambulance or other patient transport, and it is easy to carry to an accident site or into a building. The Raizer can be operated by just one paramedic whereby stressful situations may be alleviated. The fallen person will be lifted from the ground to an almost standing position in just a few minutes – also when space is confined.

Private users

With Raizer, private individuals can become more self-reliant when fall accidents occur in their homes. Usually there will be no need for external help to perform the lift; a relative will be able to help - rather than waiting for professional help. In some cases, fallen persons will be able to assemble the Raizer by themselves and perform the lift.



4 IDENTICAL LEGS AND 2 IDENTICAL BACKRESTS ENSURE CORRECT ASSEMBLY EVERY TIME

- All surface materials and structures have been developed to be easy to clean and disinfect (IP52).
- Intuitive sound and LED indicators for correct assembly.
- The remote control is stored on the seat unit.
- Disposable hygiene covers (optional equipment) are also available. This enhances infection control and sanitation.
- Fit additional seat belts (optional equipment) for increased stability of the fallen person if this is required.

Convenient and ergonomic to transport



- **Effective transport**

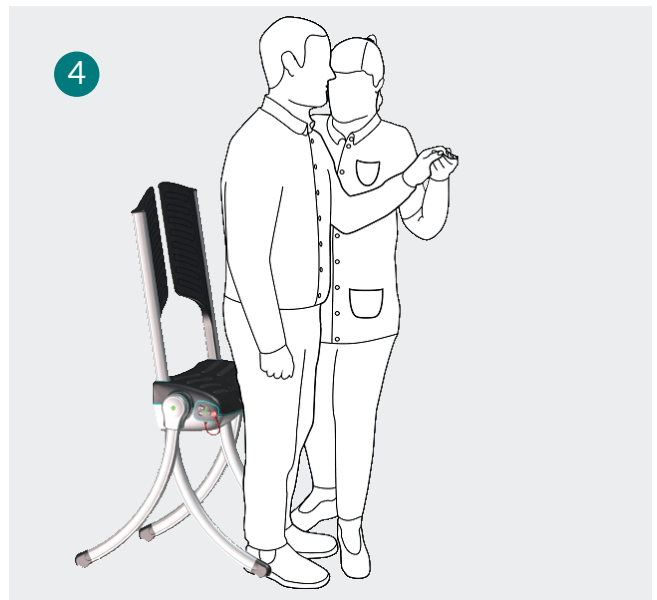
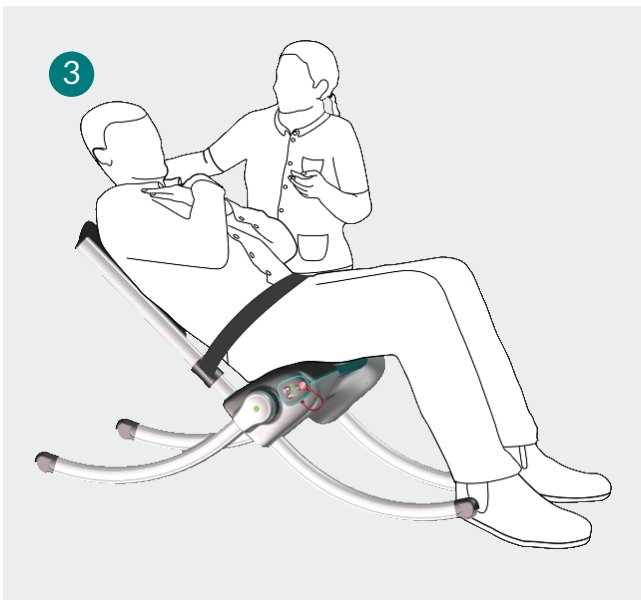
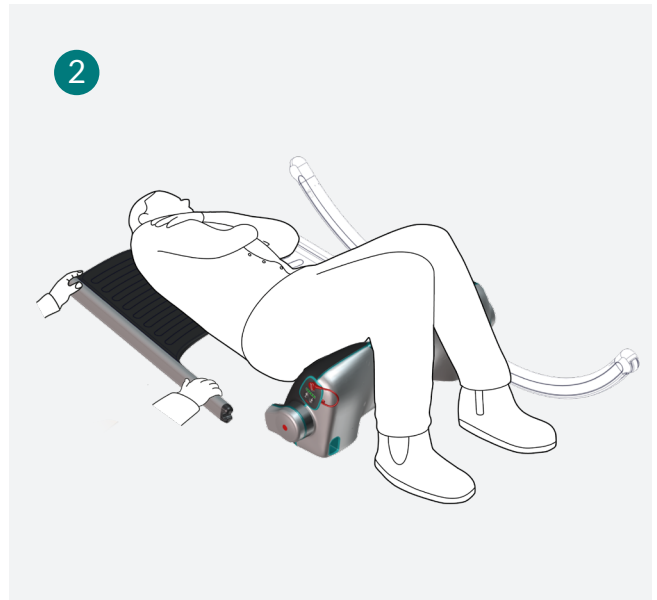
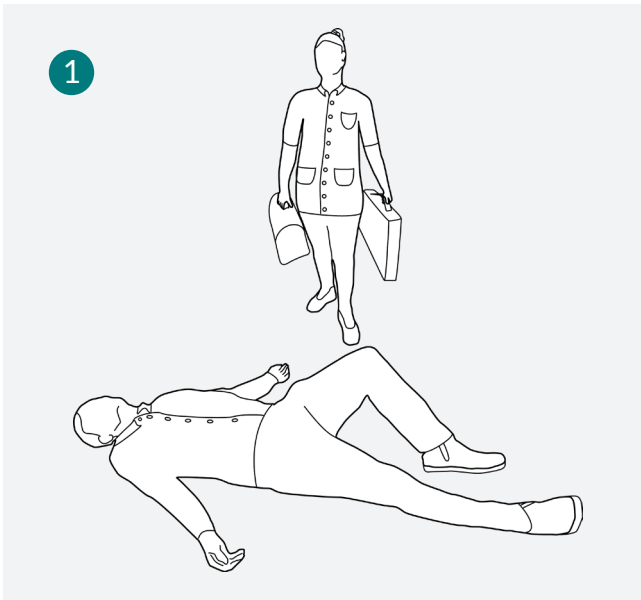
All parts are supplied in two practical bags.

Legs, backrests, and other parts are positioned intuitively in an easy-to-carry bag as their position in the bag mirrors the sequence of assembly.

The seat unit is carried separately in a protective cover with a soft handle, ergonomically designed to make sure that it is carried close to the body.

- **The two bags can also be carried on a trolley (optional equipment) with enough space to place the bags side by side.**

The trolley can be equipped with stair wheels (optional equipment) if carriage up the stairs is required, or your bicycle can be fitted with a bike bracket trolley (optional equipment) if you use your bicycle to carry the Raizer.



Technical specifications

Model: Raizer II
Lifting capacity: max. 150 kg
Lifting time: 20-30 sec.
Weight: Seat: 8.5 kg / Legs and back support: 4.5 kg / Total: 13 kg
Number of lifts when fully charged: 40 at max. load. Approx. 80 with an average load
Charging time: Up to 6 hours
Charging of empty battery: 10-15 min. = 1 lift
Chargers: USB charger and 15W charger for standard power socket
Dust and water: IP52



CE mark



Patented technology



Registered design

equal opportunities for all

Liftup A/S designs and develops welfare technology aids based on our values of dignity, safety and equal opportunity for all. As a care professional, you will see that Raizer ensures stability and safety, and also helps you save time, maintain a healthy working posture, and protects you from over-exertion.

At Liftup our principle is to work continually toward the innovative development of welfare technology products. Liftup was founded in 2003, and is a wholly privately-owned Danish enterprise.

Aesthetics, design and safety are essential in everything we do within the field of welfare technology. We don't make machines, we offer welfare aids that preserve the dignity of their users.

Contact us

LIFTUP A/S
Hagensvej 21 +45 9686 3020
9530 Støvring mail@liftup.dk
Denmark www.liftup.dk

